

MGate MB3180/MB3280/MB3480 系列

1 埠、2 埠和 4 埠標準型串列轉乙太網路 Modbus 閘道器



特色與優點

- 支援自動裝置路由以簡化配置
- 透過 TCP 埠或 IP 位置支援路由以便靈活部署
- 在 Modbus TCP 與 Modbus RTU/ASCII 通訊協定之間進行轉換
- 1 個乙太網路連接埠以及 1、2 或 4 個 RS-232/422/485 連接埠
- 同時支援 16 個 TCP master，每個 Master 最多可同時支援 32 個要求
- 簡易硬體設定與安裝

認證



簡介

MB3180、MB3280 和 MB3480 是標準的 Modbus 閘道器，可在 Modbus TCP 與 Modbus RTU/ASCII 通訊協定之間進行轉換。最多可同時支援 16 個 Modbus TCP Master，每個串列埠最多可以有 31 個 RTU/ASCII slave。對於 RTU/ASCII Master，最多可支援 32 個 TCP slave。

標準 Modbus 網路整合

這三款標準 Mgate™ 型號 (MB3180、MB3280 和 MB3480) 是專為 Modbus TCP 與 RTU/ASCII 網路的整合所設計。藉由這些型號，Modbus 串列 slave 設備可以與現有 Modbus TCP 網路無縫結合，且串列 master 可存取 Modbus TCP slave 設備。MB3180、MB3280 和 MB3480 所提供的功能可幫助網路整合更加容易、可客製化，並且幾乎與所有 Modbus 網路相容。

高密度、符合成本效益的閘道器

MGate™ MB3000 閘道器能夠有效地將高密度的 Modbus 節點連接至相同網路。MB3280 最多可管理 62 個串列 slave 節點，而 MB3480 最多可管理 124 個串列 slave 節點。每個 RS-232/422/485 串列埠都可以各自針對 Modbus RTU 或 Modbus ASCII 作業進行設定，亦可設定不同的傳輸率。如此一來，只要一個 Modbus 閘道器即可將這兩種網路與 Modbus TCP 予以整合。

自動裝置路由，簡化配置 (專利申請中)

Moxa 的自動裝置路由功能協助需要設置大量 Modbus 設備的工程師解決很多問題和不便。只需按滑鼠一鍵，即可設定 slave ID 路由表以及 Modbus 閘道器的配置，並能透過數據採集與監控 (SCADA) 系統自動偵測 Modbus 需求。由於不再需要手動建立 slave ID 路由表，自動裝置路由功能將可為工程師省下大量時間並且降低成本。

規格

Ethernet Interface

10/100BaseT(X) Ports (RJ45 connector)	1 (Auto MDI/MDI-X connection)
Magnetic Isolation Protection	1.5 kV (built-in)

Ethernet Software Features

Industrial Protocols	Modbus TCP Client (Master), Modbus TCP Server (Slave)
Configuration Options	All models: Web Console (HTTP), Device Search Utility (DSU), MGate Manager, MCC Tool, Telnet Console MGate MB3280/MB3480 only: Web Console (HTTPS)
Management	All models: ARP, DHCP Client, DNS, HTTP, SNMPv1/v2c/v3, TCP/IP, Telnet, UDP MGate MB3280/MB3480 only: HTTPS, SMTP, SNMP Trap, NTP Client

MIB	RFC1213, RFC1317
Time Management	NTP Client (MGate MB3180 Excluded)
Serial Interface	
No. of Ports	MGate MB3180: 1 MGate MB3280: 2 MGate MB3480: 4
Connector	DB9 male
Serial Standards	RS-232/422/485 (software selectable)
Baudrate	50 bps to 921.6 kbps
Data Bits	7, 8
Parity	None, Even, Odd, Space, Mark
Stop Bits	1, 2
Flow Control	DTR/DSR, RTS Toggle (RS-232 only), RTS/CTS
RS-485 Data Direction Control	ADDC® (automatic data direction control)
Pull High/Low Resistor for RS-485	1 kilo-ohm, 150 kilo-ohms
Terminator for RS-485	MGate MB3180: None MGate MB3280/MB3480: 120 ohms
Serial Signals	
RS-232	TxD, RxD, RTS, CTS, DTR, DSR, DCD, GND
RS-422	Tx+, Tx-, Rx+, Rx-, GND
RS-485-2w	Data+, Data-, GND
RS-485-4w	Tx+, Tx-, Rx+, Rx-, GND
Serial Software Features	
Industrial Protocols	Modbus RTU/ASCII Master, Modbus RTU/ASCII Slave
Modbus (Transparent)	
Max. No. of Client Connections	16
Max. No. of Server Connections	32
Power Parameters	
Input Voltage	12 to 48 VDC
Input Current	MGate MB3180: 200 mA @ 12 VDC MGate MB3280: 250 mA @ 12 VDC MGate MB3480: 385 mA @ 12 VDC
Power Connector	MGate MB3180: Power jack MGate MB3280/MB3480: Power jack and terminal block
Physical Characteristics	
Housing	Metal
IP Rating	IP30
Dimensions (with ears)	MGate MB3180: 22 x 75 x 80 mm (0.87 x 2.95 x 3.15 in) MGate MB3280: 22 x 100 x 111 mm (0.87 x 3.94 x 4.37 in)

	MGate MB3480: 35.5 x 102.7 x 181.3 mm (1.40 x 4.04 x 7.14 in)
Dimensions (without ears)	MGate MB3180: 22 x 52 x 80 mm (0.87 x 2.05 x 3.15 in) MGate MB3280: 22 x 77 x 111 mm (0.87 x 3.03 x 4.37 in) MGate MB3480: 35.5 x 102.7 x 157.2 mm (1.40 x 4.04 x 6.19 in)
Weight	MGate MB3180: 340 g (0.75 lb) MGate MB3280: 360 g (0.79 lb) MGate MB3480: 740 g (1.63 lb)

Environmental Limits

Operating Temperature	0 to 60°C (32 to 140°F)
Storage Temperature (package included)	-40 to 85°C (-40 to 185°F)
Ambient Relative Humidity	5 to 95% (non-condensing)

Standards and Certifications

Safety	EN 60950-1, UL 60950-1
EMC	EN 55032/24
EMI	CISPR 32, FCC Part 15B Class A
EMS	IEC 61000-4-2 ESD: Contact: 4 kV; Air: 8 kV IEC 61000-4-3 RS: 80 MHz to 1 GHz: 3 V/m IEC 61000-4-4 EFT: Power: 1 kV; Signal: 0.5 kV IEC 61000-4-5 Surge: Power: 1 kV (MB3180/MB3280) IEC 61000-4-5 Surge: Power: 1 kV; Signal: 2 kV (MB3480) IEC 61000-4-6 CS: 3 V IEC 61000-4-8 PFMF IEC 61000-4-11 DIPs

MTBF

Time	MGate MB3180: 908,440 hrs MGate MB3280: 749,455 hrs MGate MB3480: 1,242,173 hrs
Standards	Telcordia SR332

Warranty

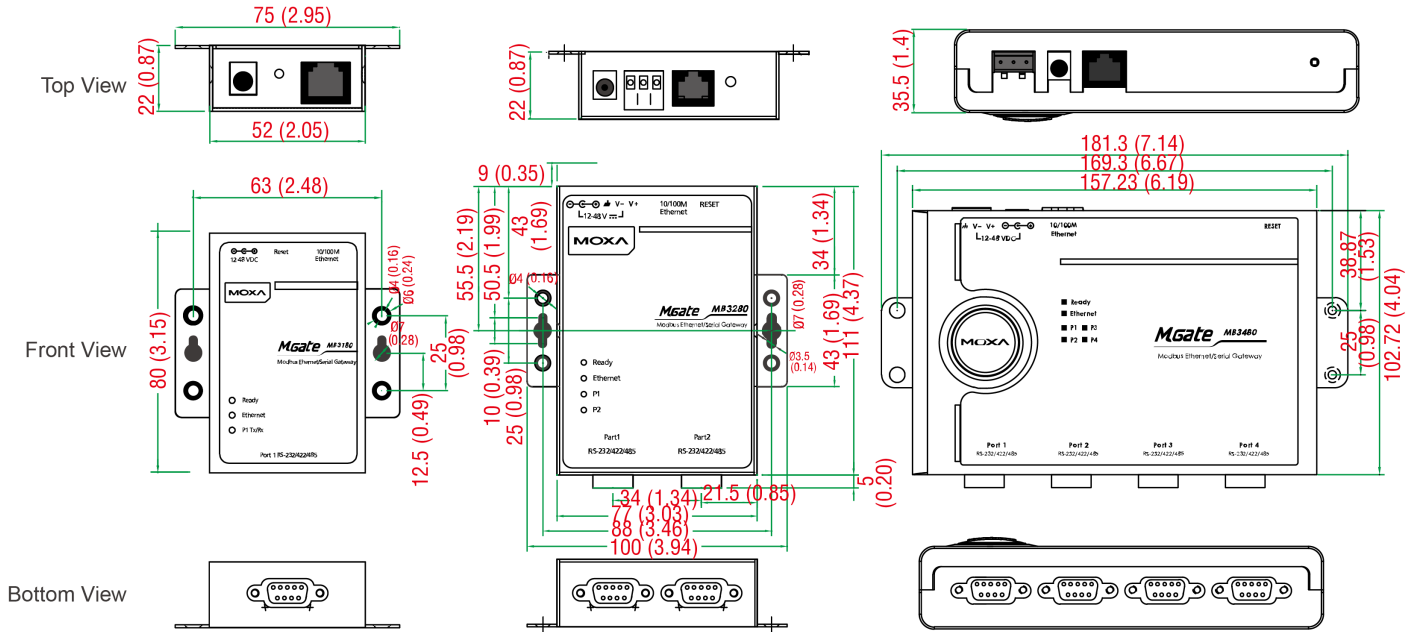
Warranty Period	5 years
Details	See www.moxa.com/tw/warranty

Package Contents

Device	1 x MGate MB3180/MB3280/MB3480 Series gateway
Power Supply	1 x power adapter, suitable for your region
Documentation	1 x quick installation guide 1 x warranty card

尺寸

單位：公釐 (英吋)



訂購資訊

Model Name	No. of Serial Ports
MGate MB3180	1
MGate MB3280	2
MGate MB3480	4

配件 (選購)

Cables

CBL-F9M9-150	DB9 female to DB9 male serial cable, 1.5 m
CBL-F9M9-20	DB9 female to DB9 male serial cable, 20 cm

Connectors

Mini DB9F-to-TB	DB9 female to terminal block connector
-----------------	--

DIN-Rail Mounting Kits

DK35A	DIN-rail mounting kit, 35 mm
-------	------------------------------

Wall-Mounting Kits

WK-35-01	Wall-mounting kit, 2 plates, 6 screws, 35 x 44 x 2.5 mm
----------	---

Power Adapters

PWR-12050-WPAU-S2	Non-locking barrel plug, 12 VDC, 0.5 A, 100-240 VAC, Australia (AU) plug, 0 to 40°C operating temperature
PWR-12050-WPCN-S2	Non-locking barrel plug, 12 VDC, 0.5 A, 100-240 VAC, China (CN) plug, 0 to 40°C operating temperature
PWR-12050-WPEU-S2	Non-locking barrel plug, 12 VDC, 0.5 A, 100-240 VAC, Continental Europe (EU) plug, 0 to 40°C operating temperature

PWR-12050-WPUK-S2	Non-locking barrel plug, 12 VDC, 0.5 A, 100-240 VAC, United Kingdom (UK) plug, 0 to 40°C operating temperature
PWR-12050-WPUSJP-S2	Non-locking barrel plug, 12 VDC, 0.5 A, 100-240 VAC, United States/Japan (US/JP) plug, 0 to 40°C operating temperature

© Moxa Inc. 版權所有.2021 年 4 月 14 日更新。

未經 Moxa Inc. 明確書面許可，不得以任何方式複製或使用本文件及其任何部分。產品規格如有變更，恕不另行通知。請至本公司官網了解最新的產品資訊。